

Fig. 1. A flowchart of the installation for measuring the waveforms of current, voltage and power of energy-efficient light sources

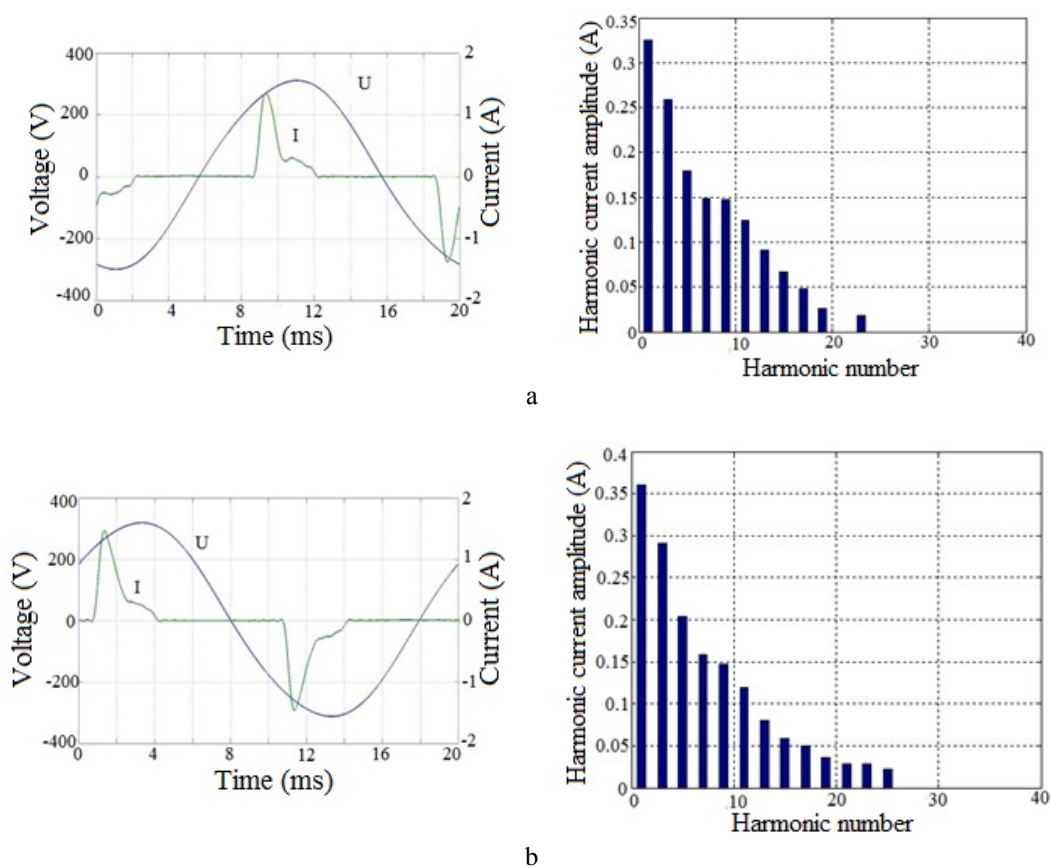


Fig. 2 (a–b). Current and voltage waveforms and current harmonics for the lamps:
a – Realux 55W; b – Maxsus 55W

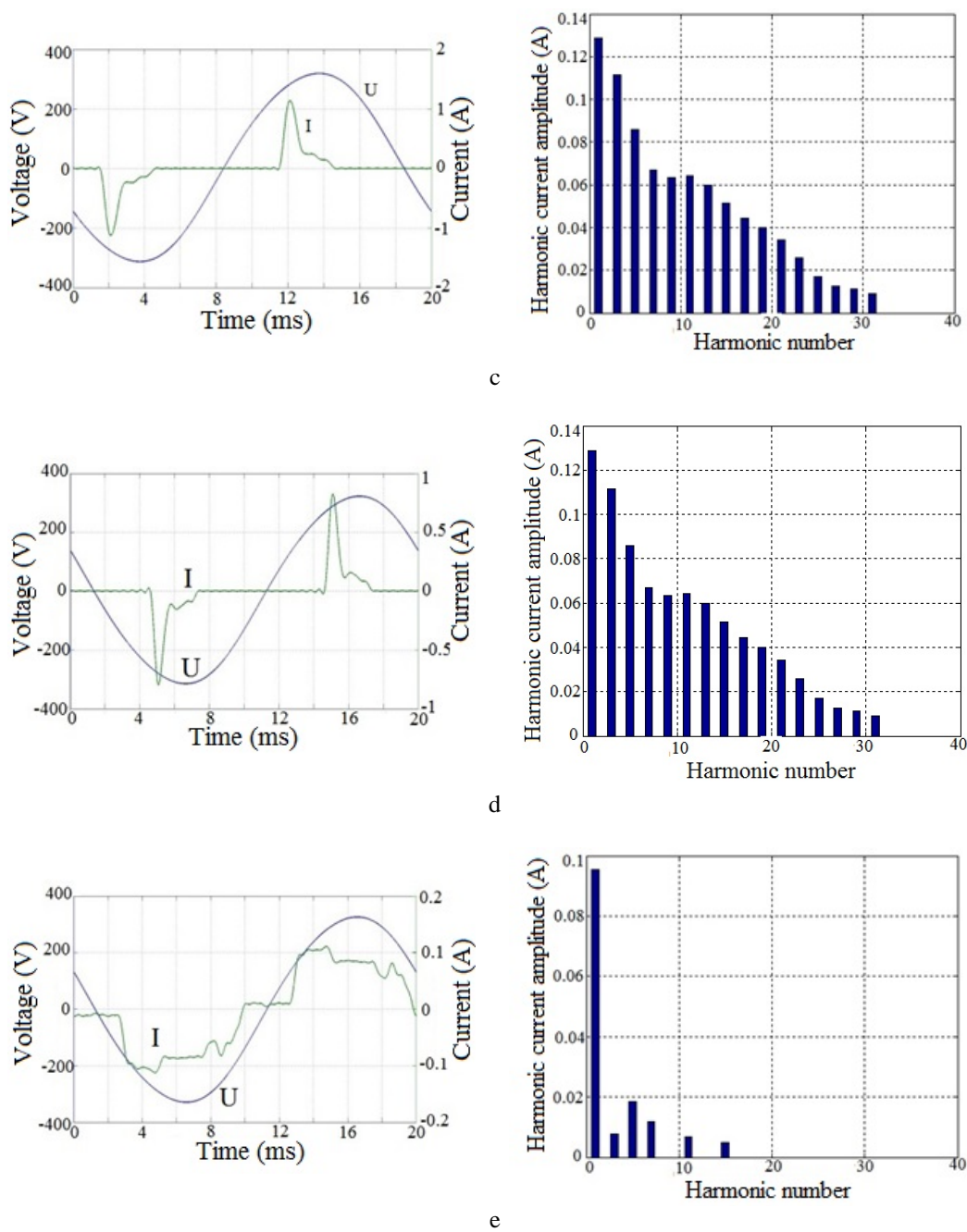
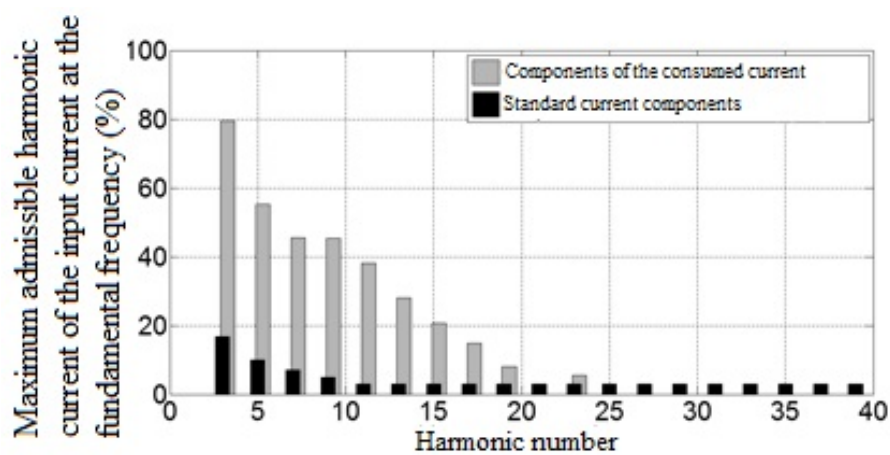
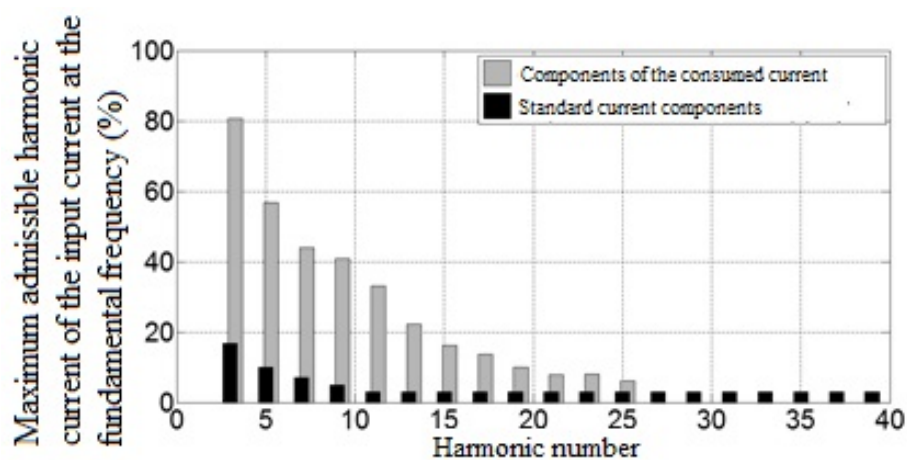


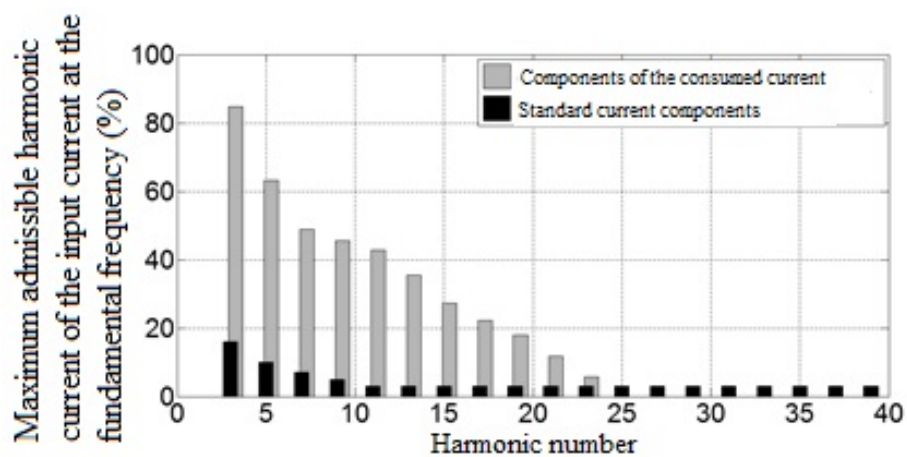
Fig. 2 (c-e). Current and voltage waveforms and current harmonics for the lamps:
c – Global 46W; d – Realux 36W;
e – Philips 14W LED



a

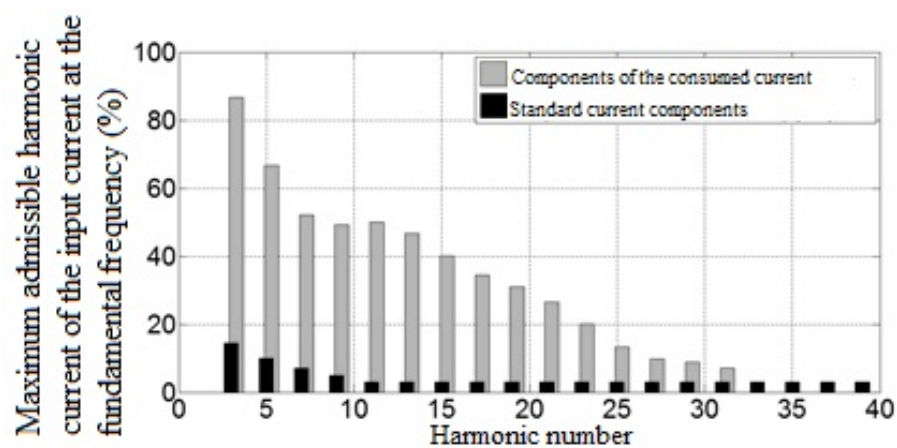


b

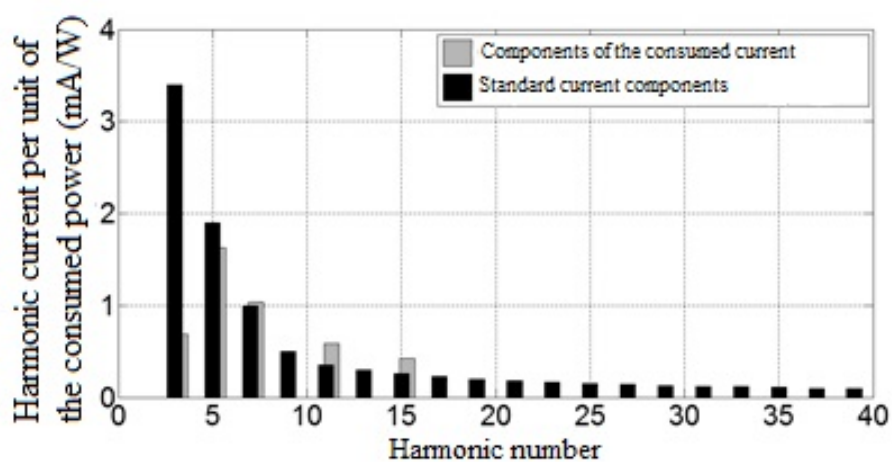


c

Fig. 3 (a–c). Harmonic content of the consumed current in comparison with the standard data for the lamps: a – Realux 55W; b – Maxsus 55W; c – Global 46W;



d



e

Fig. 3 (d–e). Harmonic content of the consumed current in comparison with the standard data for the lamps:
d – Realux 36W; e – Philips 14W LED

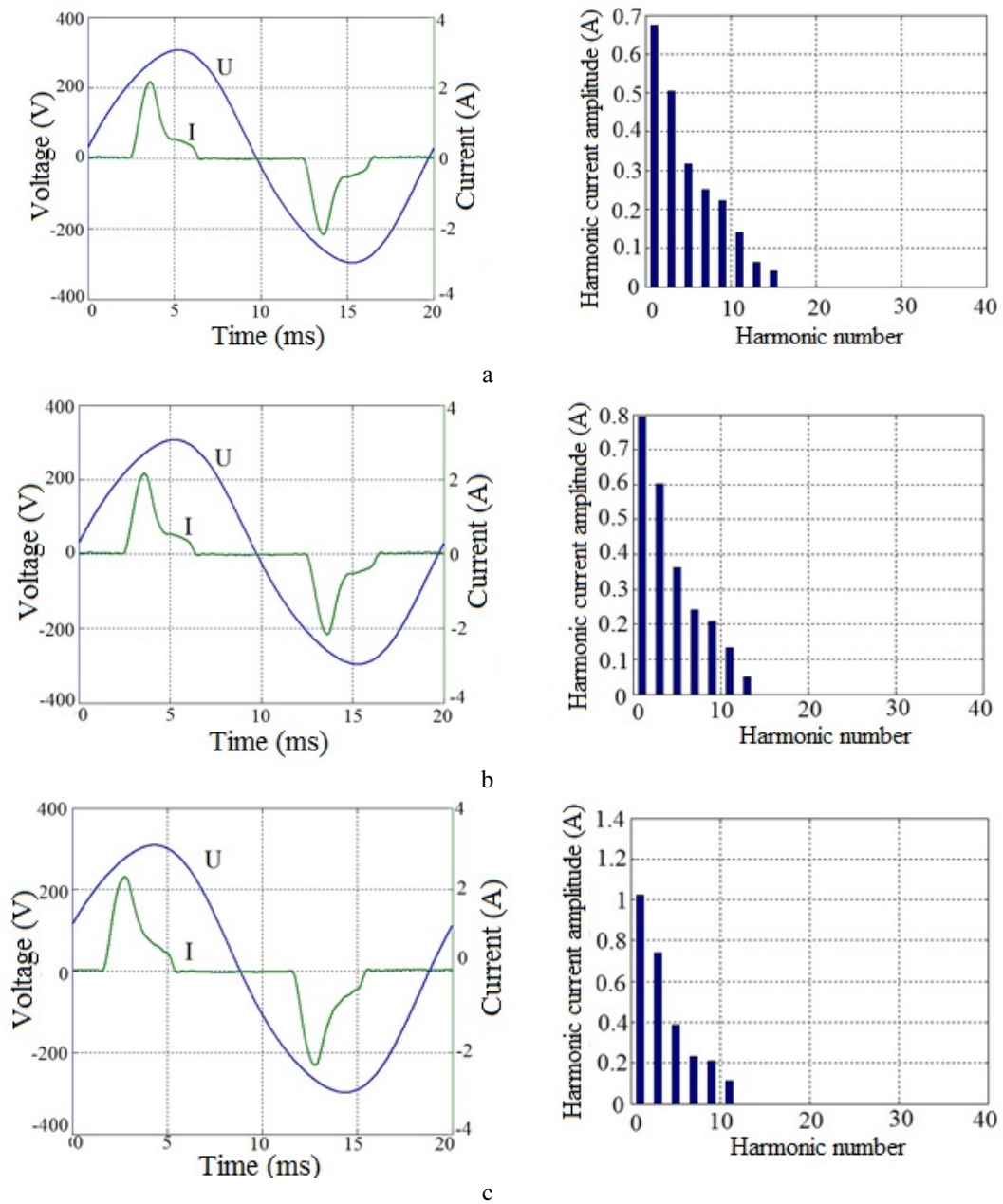


Fig. 4. Current and voltage waveforms and current harmonics for the lamps:
a–Realux 36W and Global 46W; b–Realux 36W, Global 46W, andMaxsus 55W; c–Realux 36W,
Global 46W, Maxsus 55W, and Realux 55W