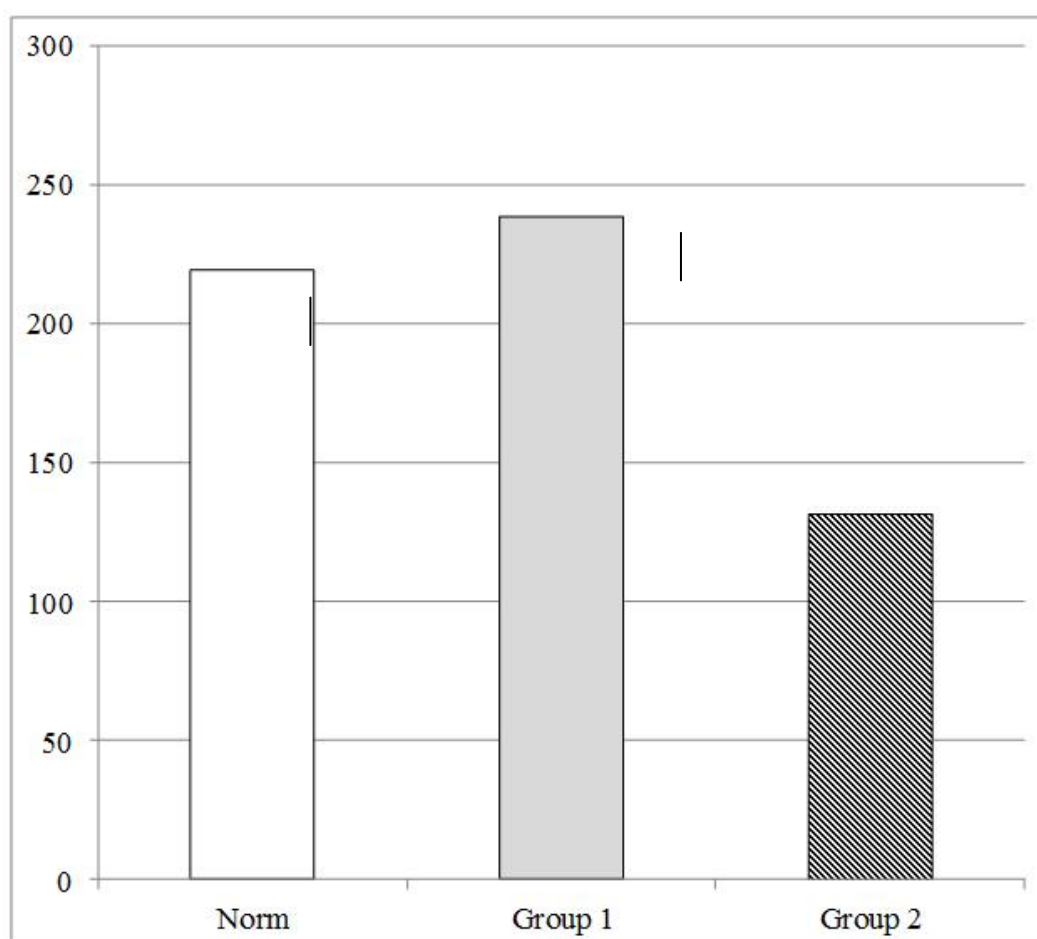
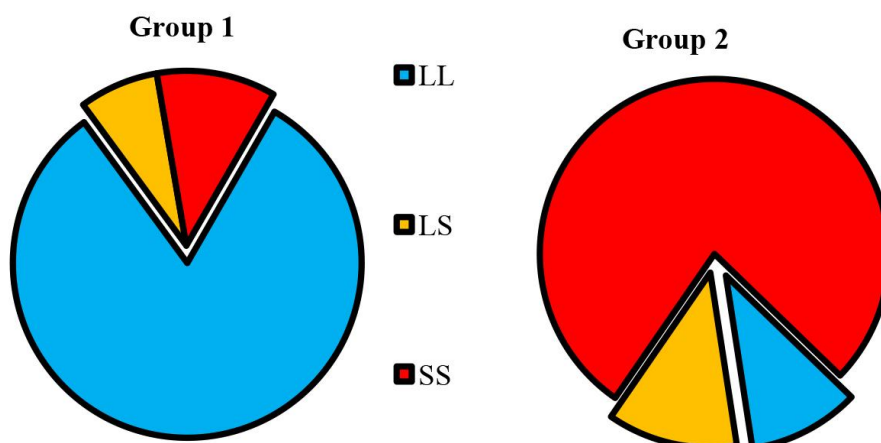


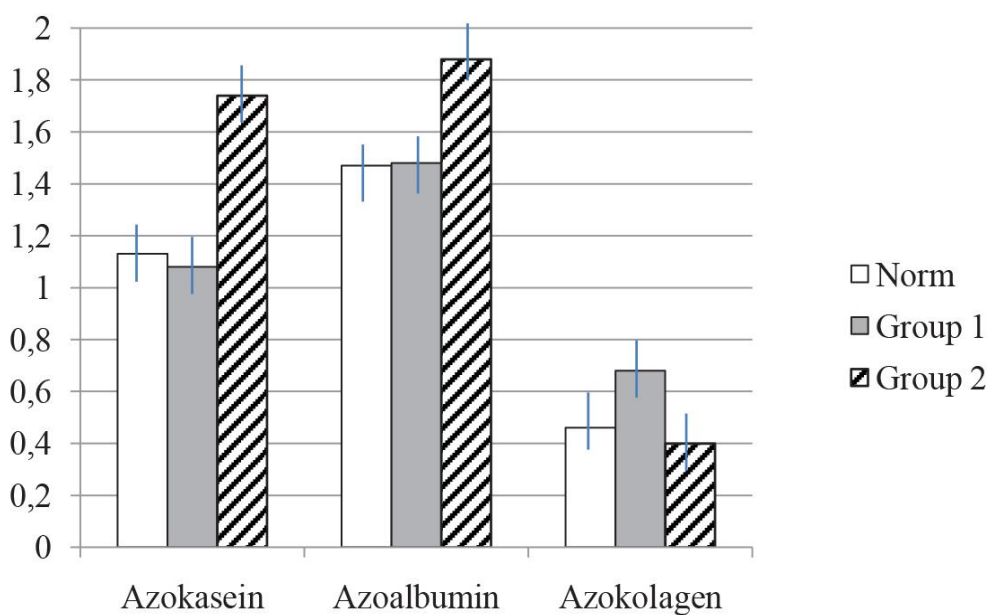
**Fig. 1.** The comparison of phonoenterographic parameters in examined patients



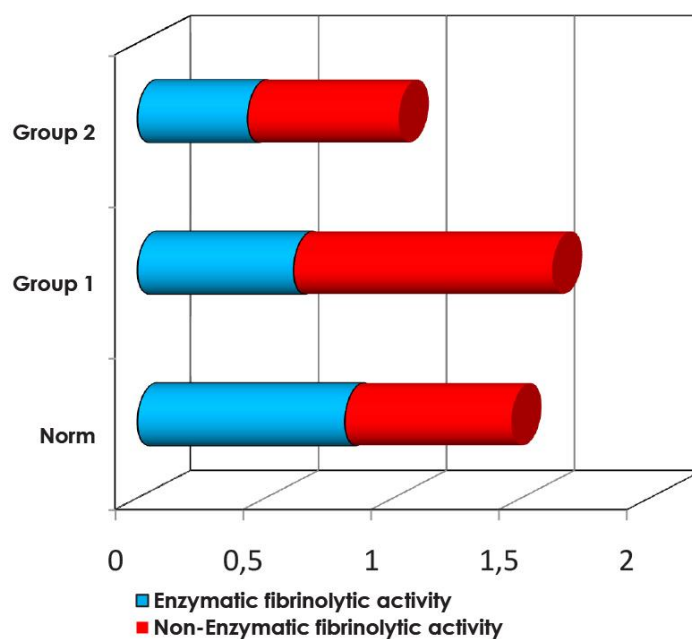
**Fig. 2.** The serotonin concentration in blood plasma of examined patients (ng/ml)



**Fig. 3.** The structure of SERT gene polymorphism in examined patients



**Fig. 4.** The comparison of PA parameters in examined patients (E440/ml/h)



**Fig. 5.** The comparison of Total fibrinolytic activity (EFA+NFA) parameters in examined patients (E440/ml/h)

