

Fig. 1. The fragment of the "giant" osteoclast cytoplasm with nuclei (Flight). Electron micrograph, $\times 18000$

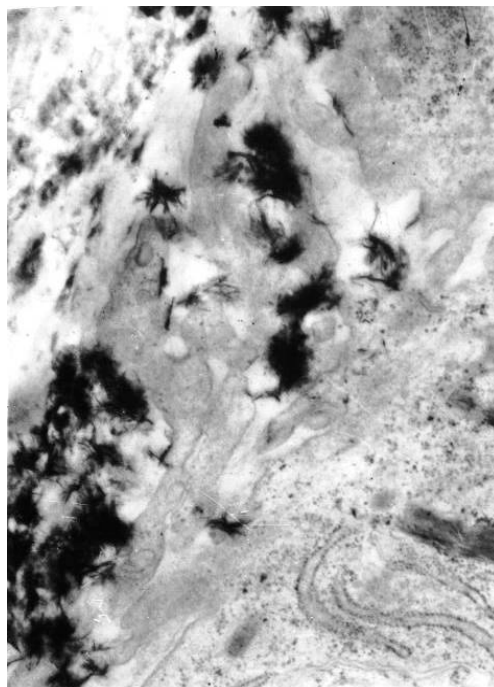


Fig. 2. The fragment of zone 2 (the "brush border" in the "giant" osteoclast (Flight). Electron micrograph, $\times 8000$

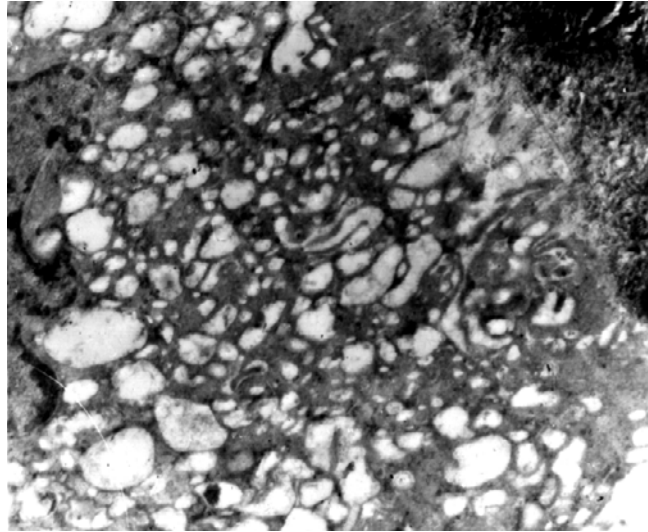


Fig. 3. The fragment of zone 2 (the developed "brush border" in the "giant" osteoclast (Flight).
Electron micrograph, $\times 1800$

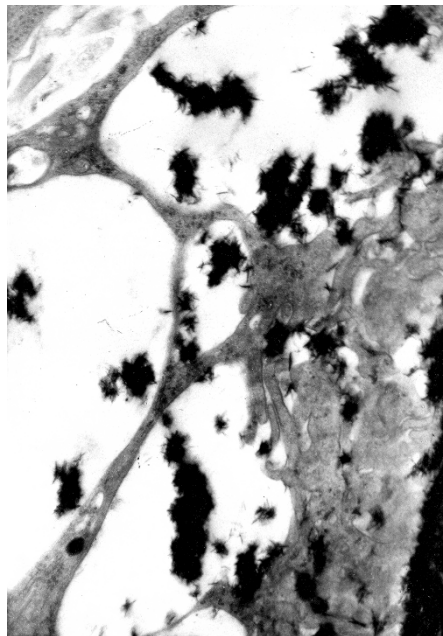


Fig. 4. The fragment of well-developed "brush-border" with a mineral matrix undergoing
resorption. Microgravity. Electron micrographs $\times 10000$